

Research Activities Management Portal (RAMP)

Your Interface to ScooterLab Data and Research Activities

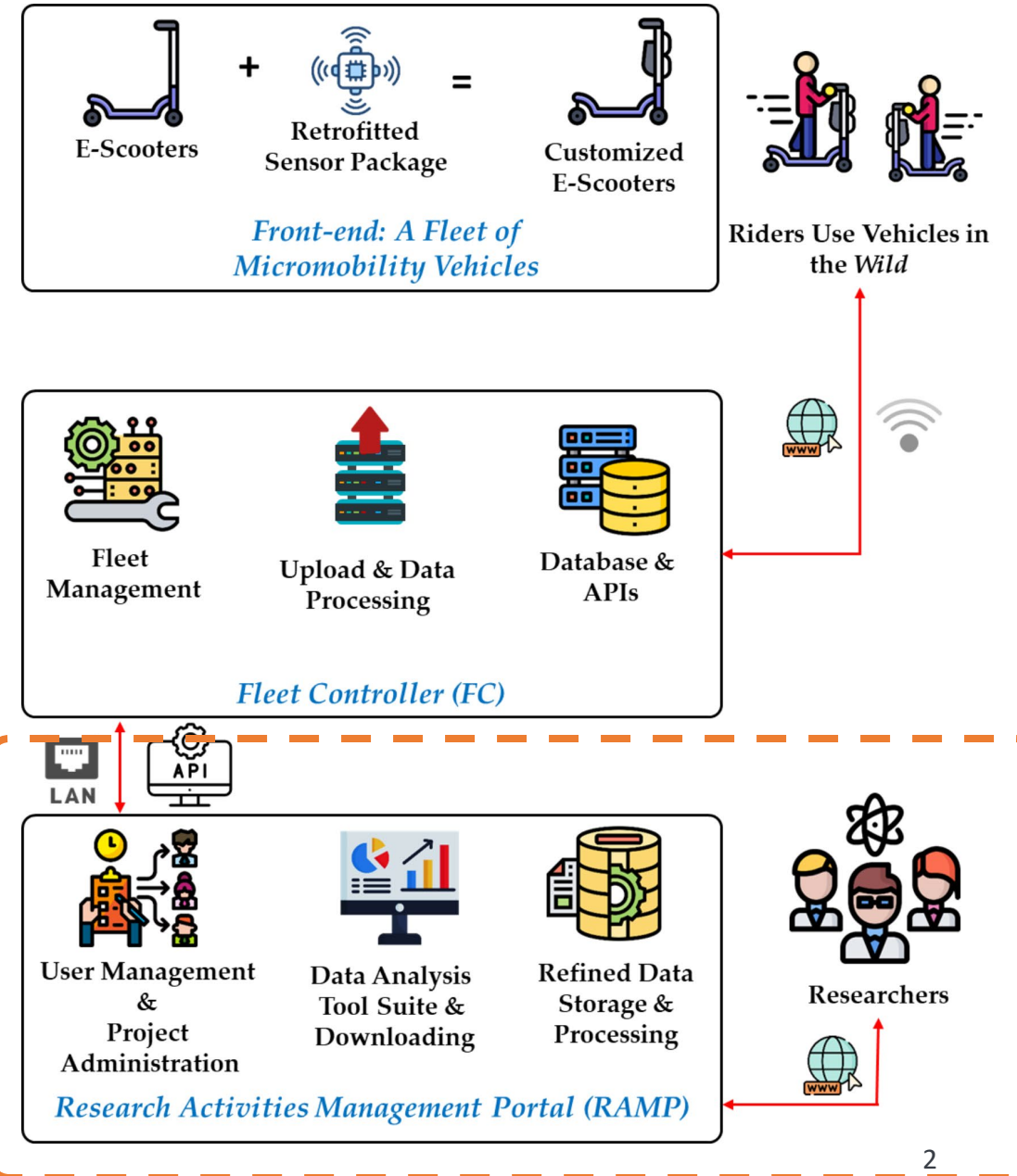
Buddhi Ashan M. K.
Postdoctoral Fellow, University of Texas at San Antonio

ScooterLab Workshop 2025
Monday, May 19, 2025 @SP1 San Antonio



ScooterLab

- 🛴 Front-end: E-scooters & sensing
- 🛴 Fleet Controller (FC)
- 🛴 Research Activities Management Portal (RAMP)



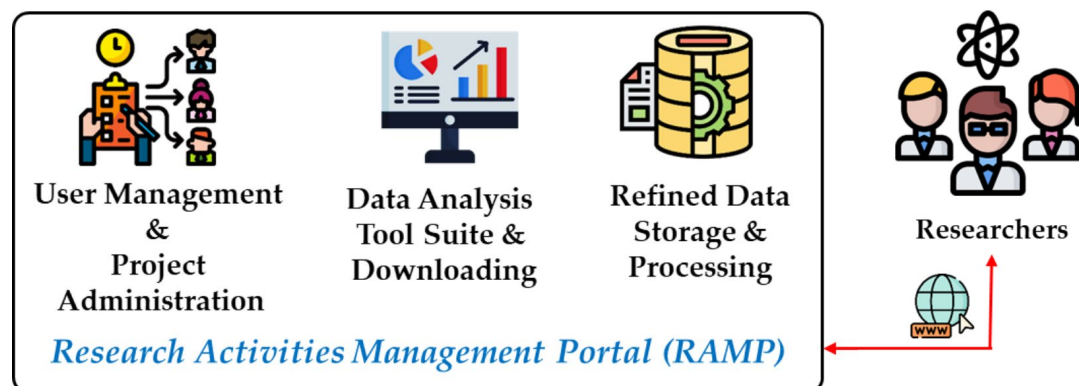
Overview

- 🛴 Role in ScooterLab
- 🛴 What is RAMP
- 🛴 Core features
- 🛴 Architecture
- 🛴 Demonstration
- 🛴 How to apply for a project

Role in ScooterLab

- 🛒 Bridge between sensor-rich micromobility testbed and researchers
Manages projects and produces curated data
- 🛒 Security, scalability, and support for Researchers
- 🛒

What is RAMP



- 🔗 Research Activities Management Portal
- 🔗 Developed under ScooterLab to manage researcher access to data
- 🔗 Web interface to support projects, data access, and analysis

Core features



Administration

- ✓ Project administration
 - ✓ Setup Projects
 - ✓ Project progress
 - ✓ Share data
- ✓ User management
 - ✓ Secure access
 - ✓ Access control



Data Analysis Tool Suite

- ✓ Map tool
- ✓ Stats tool
- ✓ Data downloading
- ✓ Data filtering



Data Storage

- ✓ Data processing
- ✓ Refined data

Architecture

Backend: PHP (Laravel)

Frontend: JavaScript

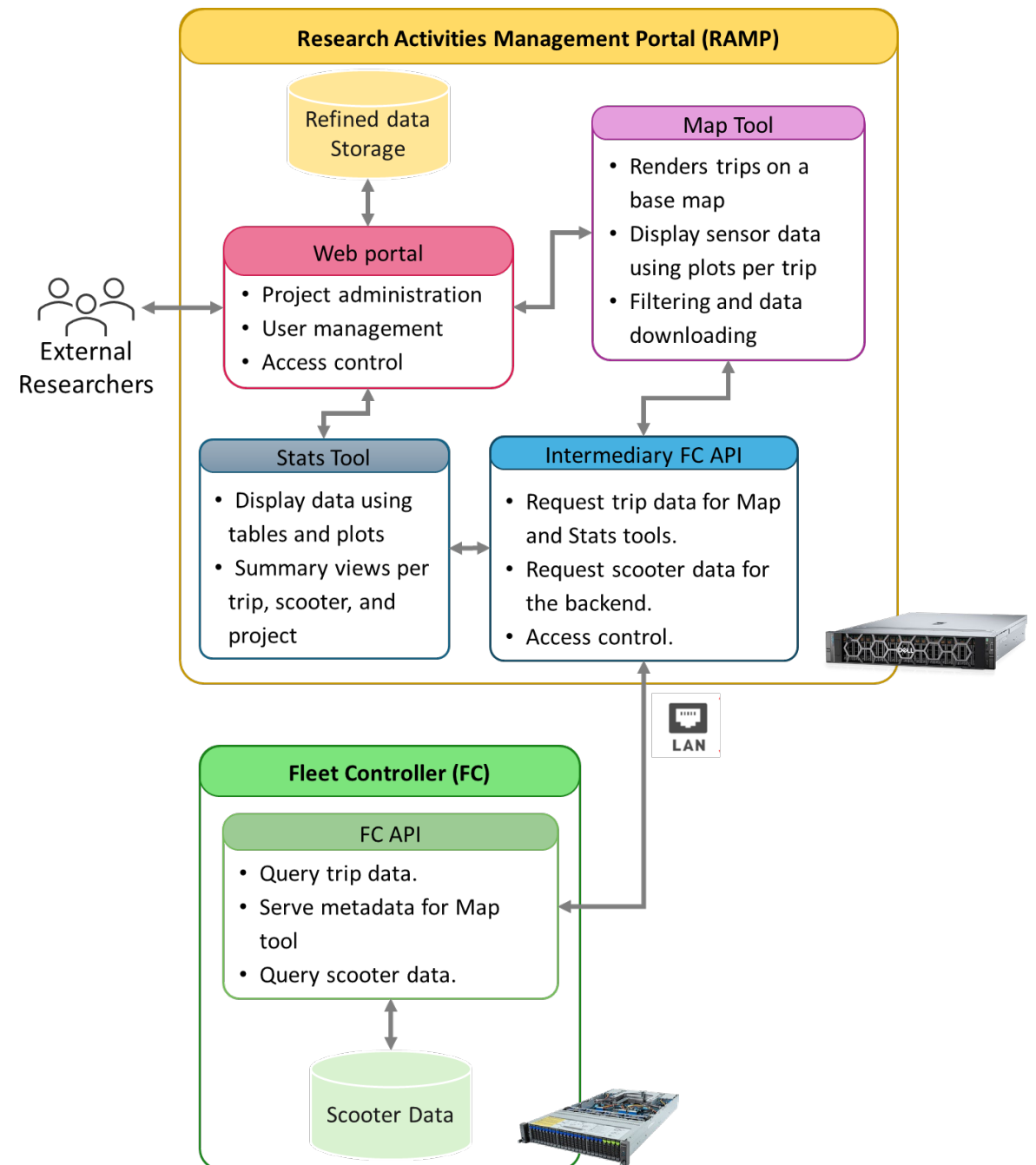
Server Specification

Intel Xeon Platinum 8468 processor x 2

2TB of memory

Nvidia L40S GPUs 46GB VRAM x4

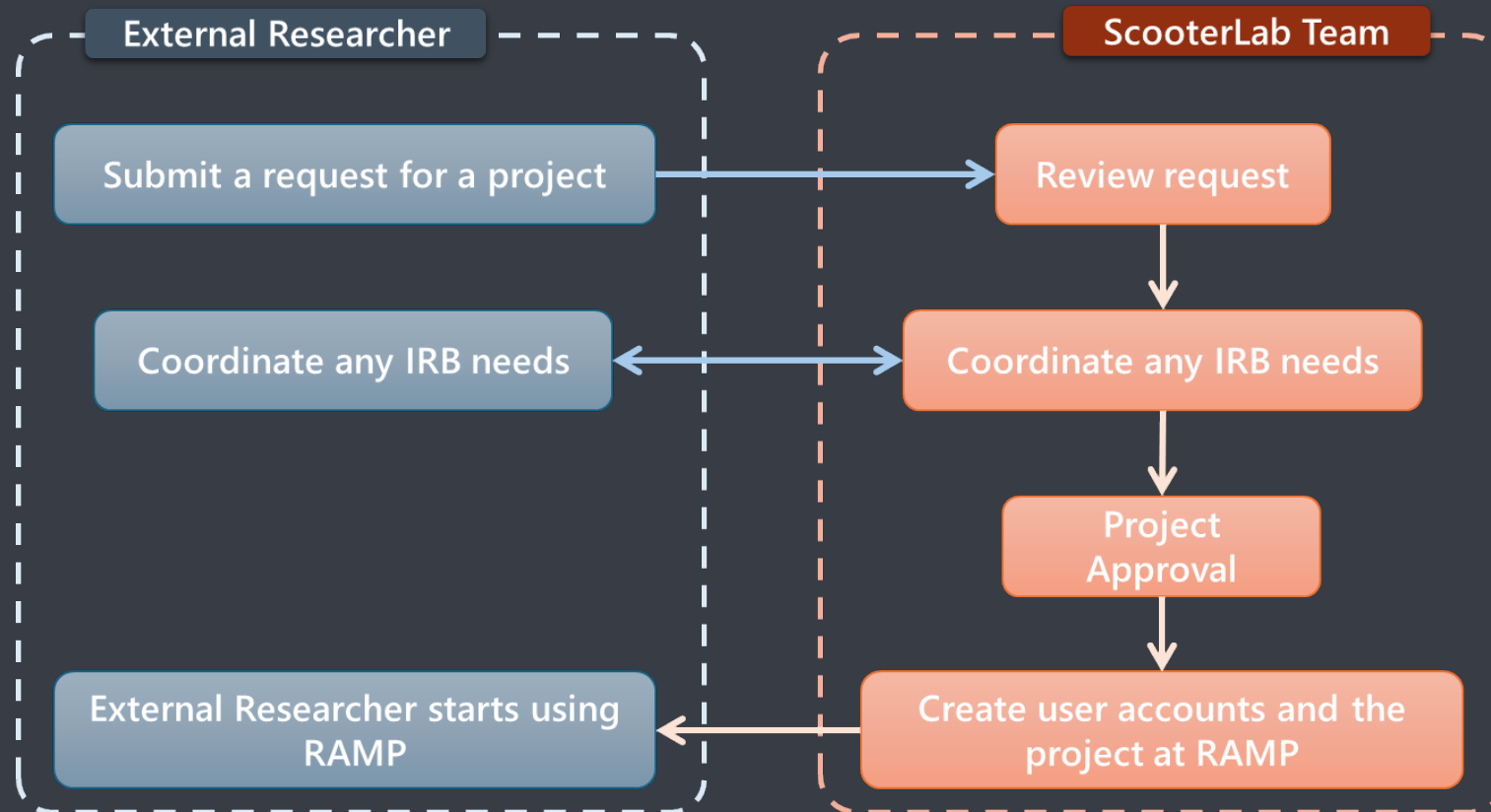
15TB of storage



Demonstration

How to submit your request

🔗 Visit to <https://scooterlab.utsa.edu/forresearchers>



How to submit your request – Cont.

- 🛒 Project Title
- 🛒 Research Objectives
- 🛒 Proposed Use of the ScooterLab Platform
- 🛒 Research Impact
- 🛒 Timeline
- 🛒 Technical Requirements
- 🛒 Project Team

Next

- 🛠️ Heat maps for Map tool
- 🛠️ Extend data download file formats (GeoJSON, Shape files)
- 🛠️ Support for video and audio post processing
- 🛠️ Compute Tool: Allow researchers to leverage our GPUs

Questions?



Apply for a research
collaboration



Visit ScooterLab

scooterlab.utsa.edu/forresearchers